

Get on the EV charging map: A regional approach for economic and tourism development

Ontario Smart Mobility Readiness Forum

November 2, 2023



Community Energy
Association

Our Work



CEA helps communities with:



INITIATION

- Program design
- Grants
- Regional collaborations



MANAGEMENT

- Manage advisory committees
- RFPs/Vendor selection
- Contract negotiation & mgmt
- Deployment management
- Financial admin & reporting



COMMUNICATIONS

- Program branding, marketing & promotion
- Video production
- Digital communications

CEA has expertise in:



TRANSPORTATION



BUILDINGS



WASTE



CEA's people work to accelerate bold action by local governments and Indigenous communities related to energy and climate.



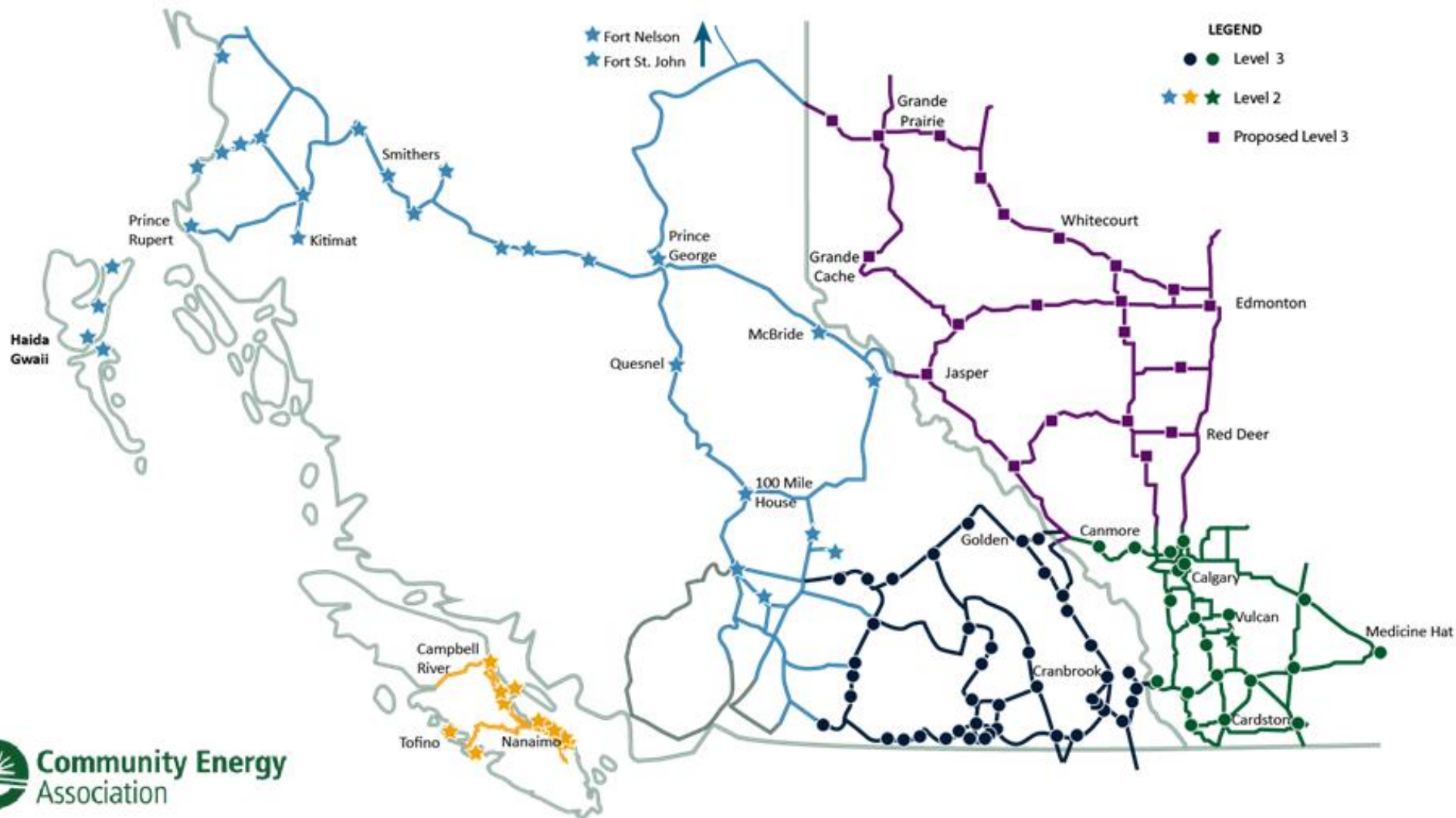
Mid-Island
28 Level 2 Stations

Charge North
58 Level 2 Stations
2,780 km of highway

Eventure Northwest Alberta
20 + DCFC/Level 2 Combined Stations:
PROPOSED

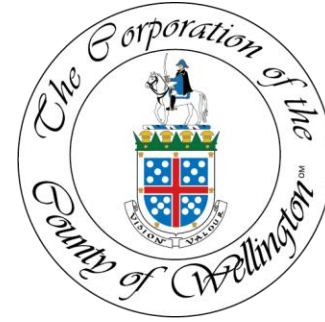
Peaks To Prairies
20 DCFC/level 2 combined stations
2020 network complete
1,800km of highway

Accelerate Kootenays
13 DCFC / 40 Level 2's
2018 DCFC network complete
1,800km of highway



Rural Recharge


- Six counties: Wellington, Bruce, Grey, Dufferin, Huron, Perth
- Over a dozen municipalities
- Build a baseline EV charger network
 - ~20 ish L3 sites
 - 10 or more L2 sites (min. of 4 charging ports per location)





EV Network Strategy

- Lack of charging infrastructure
- Inhibiting tourism to the region and local adoption of EVs
- Collaboration is key



DCFC Station
Government-owned 

DCFC Station
Private-owned 


DCFC Station
Private-owned 


By The Numbers




 **\$2.16 Million**
Total cash investment


 **>1,400kms**
Highway connected for EV travel.

 **27%**
Increase in uses from Q4 2019 to Q1 2020

 **12,025 kWh**
Total energy consumed (June-Dec. 2019)

 **4,999 Litres**
Gasoline avoided

 **>1,000**
Number of people engaged at 16 events throughout the region

 **137**
Number of unique users of the Canmore station in the first 3 months of operation

 **11,500 kg CO₂e**
GHG emissions avoided (June-Dec. 2019)



EV Network Strategy Development

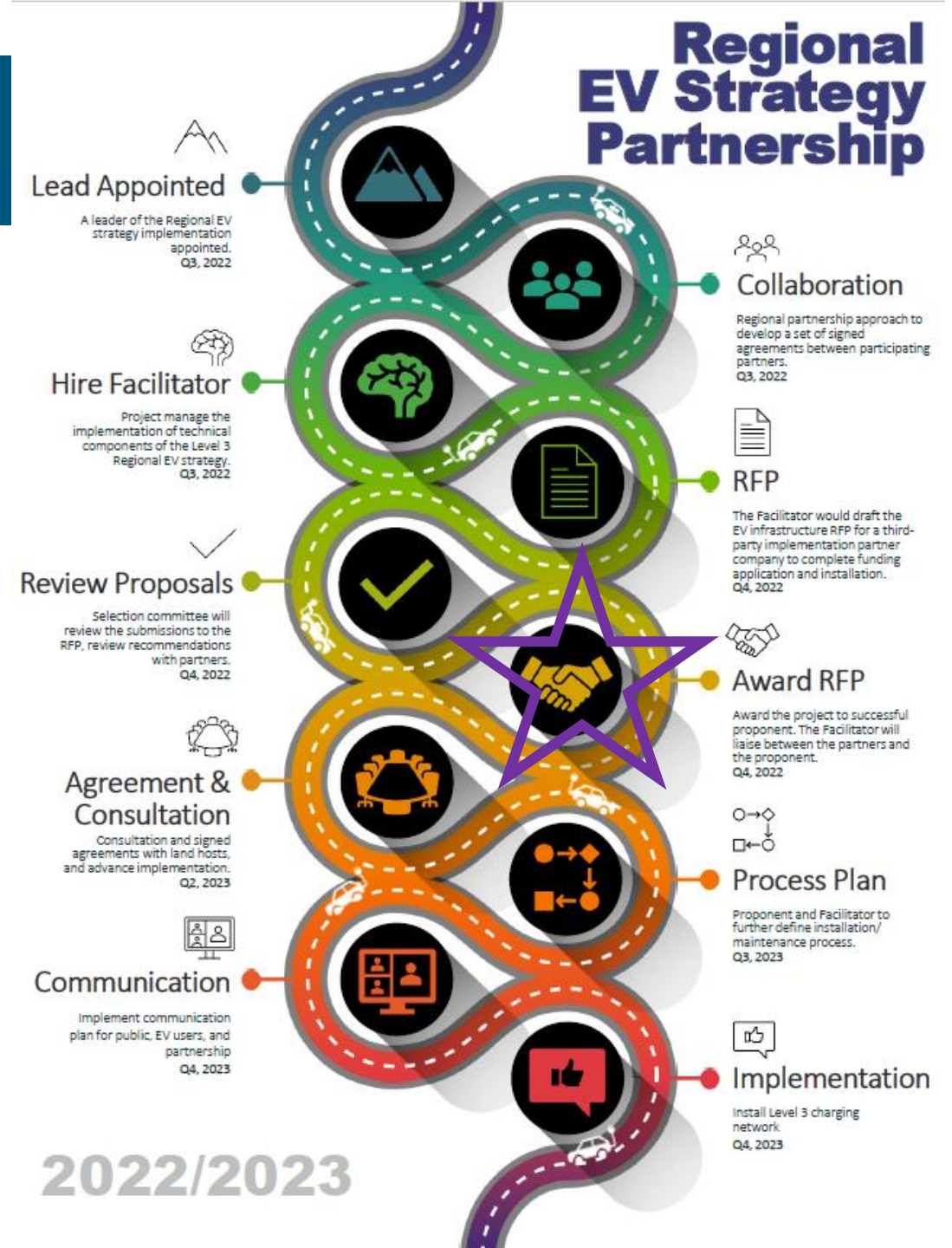
- Current state analysis
- Surveys
 - EV Drivers & Residents
- Future scenario modelling
- Siting criteria
- Options for implementation
 - Owner/operator models
 - Funding streams

Siting Criteria



Getting to implementation

- Getting started is the hardest part
- First steps require a significant time and effort investment



Collaboration is Key

A municipal perspective on the co-benefits of this approach to a regional EV network...

- **Derry Wallis**

- Climate Change and Energy Specialist, Huron County

- **Hannah Cann**

- Resiliency and Stewardship Coordinator, Perth County

Rural Recharge

- Six counties: Wellington, Bruce, Grey, Dufferin, Huron, Perth
- Over a dozen municipalities
- Build a baseline EV charger network
 - ~20 ish L3 sites
 - 10 or more L2 sites (min. of 4 charging ports per location)



Questions and Thank you



Danielle Wiess

dwiess@communityenergy.ca

www.communityenergy.ca